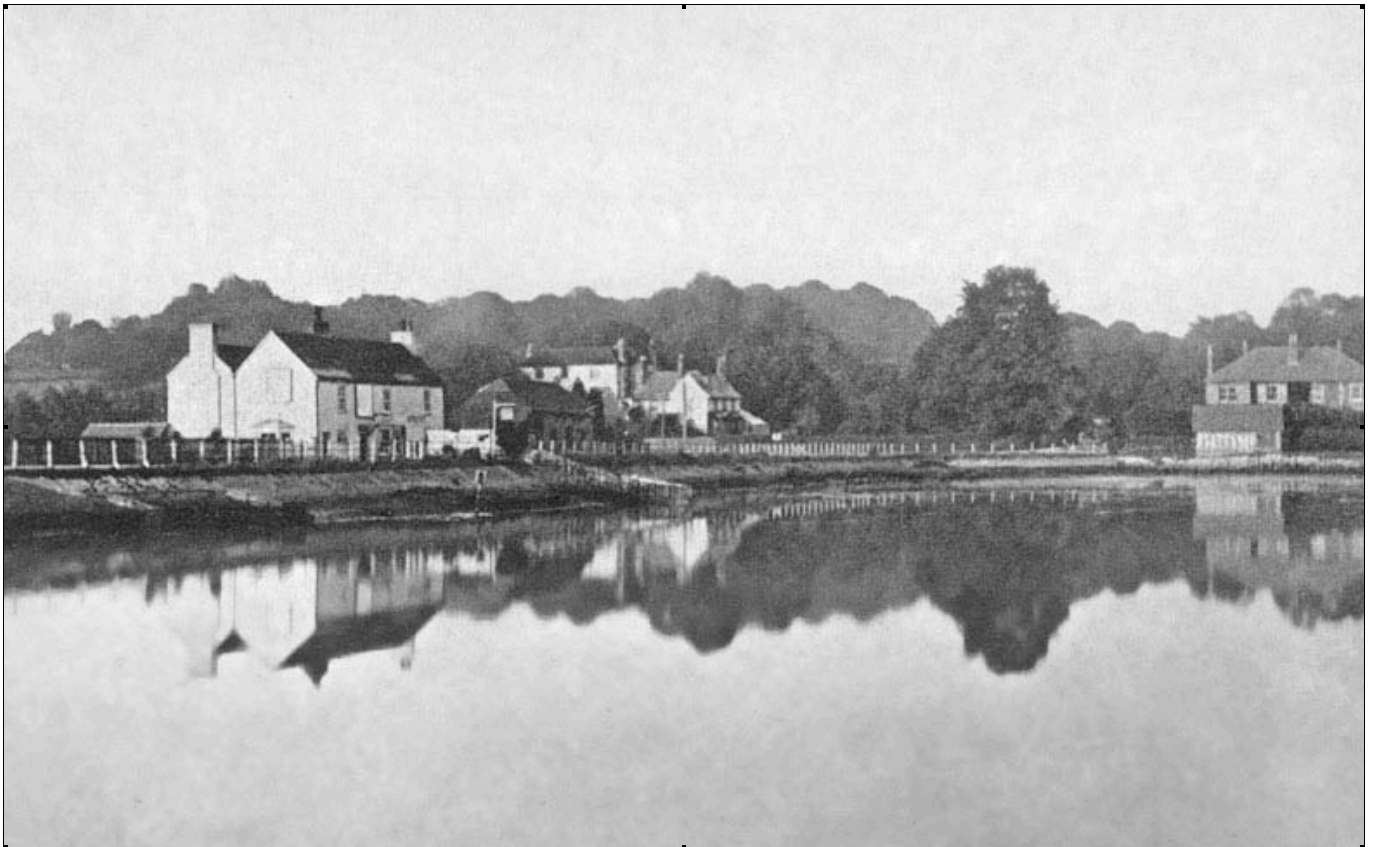


Old Lymington Town:

Acknowledgements to: www.lymington.org/photographs/lymingtonphoto144.html



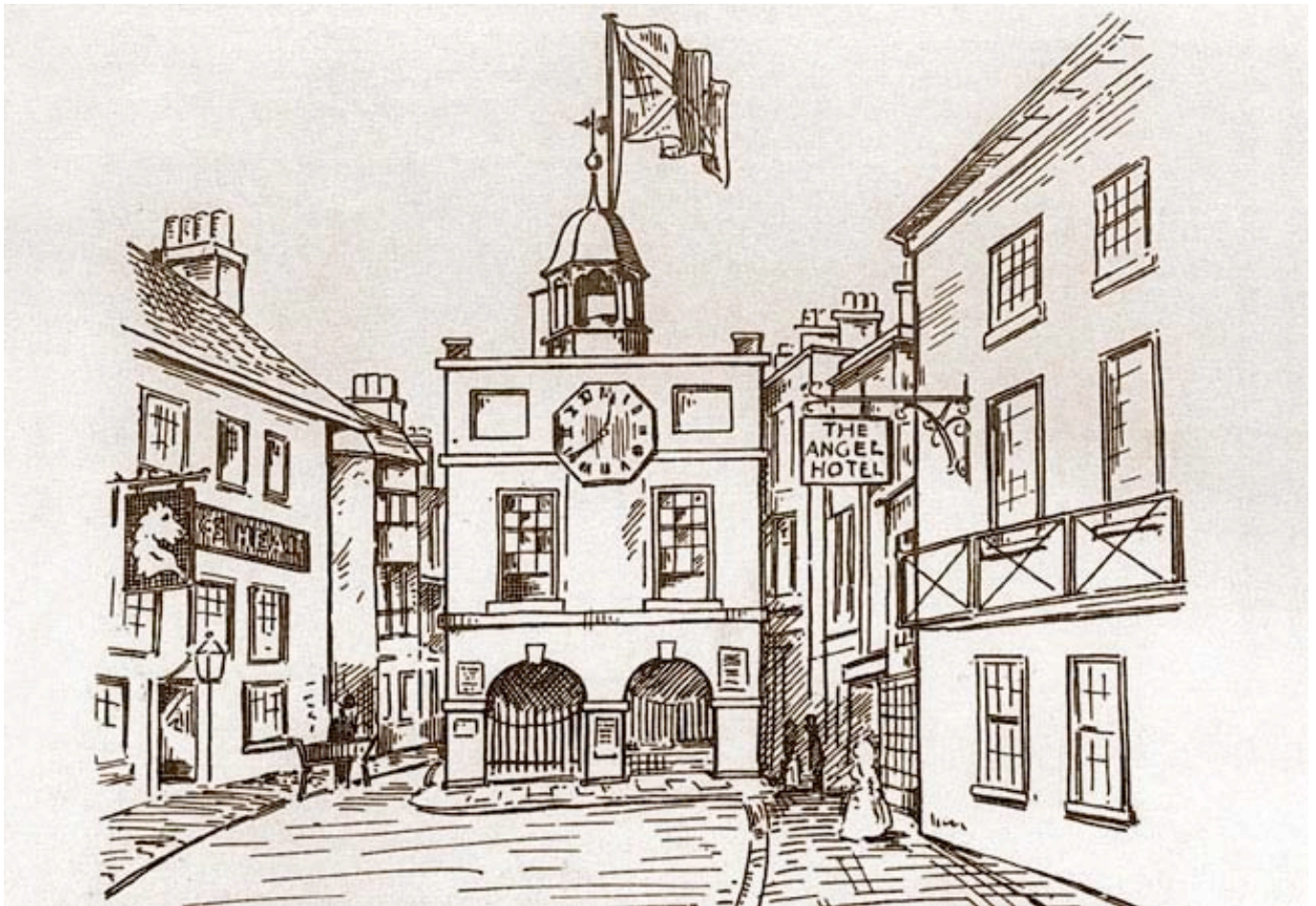
Lymington Toll Bridge - c1920



Lymington River - 19th century



Lower High Street, Lymington - 1930



The Third Lymington Town Hall, pulled down in 1858 (From a drawing by Edward King)



Comparison - Lymington High Street - c1900 & 1990's



St.Thomas church - 1910s

Edward King (A Walk through Lymington)..

"**Ways**" were stone sets laid across the street to allow people to cross the road but with the yearly addition of more gravel, the road on either side of the "Way" was much higher and I well remember driving in a carriage up the street and the dreadful shock received when passing these dips. Crossing sweepers were employed at each "Way" to keep them cleared and passengers gave coppers for this service. I only remember four of these crossings; at the church, at the Bugle, The Angel and the corner of Gosport Street.



Lymington Church – 1905

Comment: On the right-hand on the pavement is the memorial to the Gas Installation in Lymington, This memorial is now residing on the paved area immediately to the South of the RLym YC.



St.Thomas Church – 1905

Comment: Between the 2 cyclists and the lady on the right-hand pavement is the memorial to the Gas Installation in Lymington, This memorial is now residing on the paved area immediately to the South of the RLym YC.



Station Street, Lymington - 1920s



Lymington Quay - 1907 (Railway bridge on the right)



Lymington - Shipyard 1907



Lyminster Toll Bridge- c1907



St.Thomas church, Lymington - 1869



Lymington Station - c1910



View near Lymington by F. Jukes - 1795



St Thomas Street - c1910



St Thomas Street - c1910



Quay Hill, Lymington - 1940s

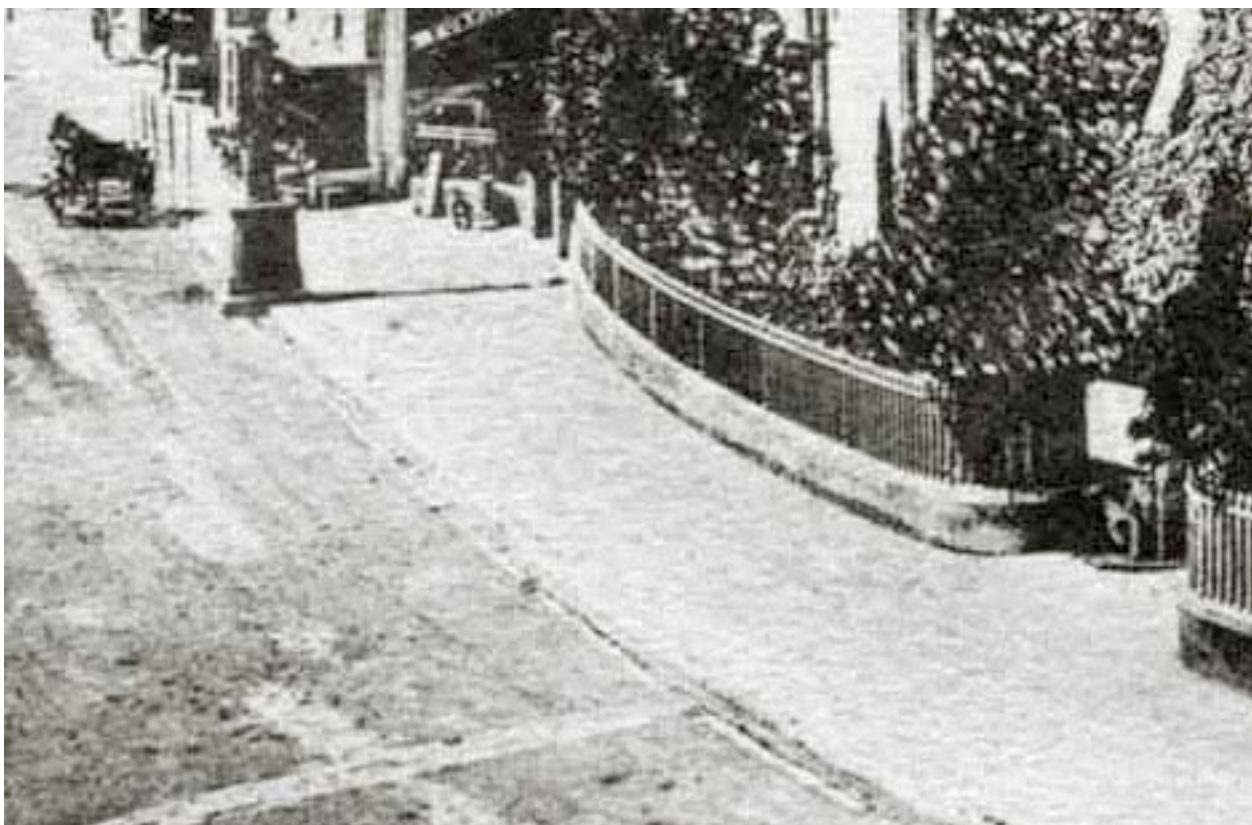
Comment: The pub and the bread and teashop long gone.



Lymington, St Thomas's Street 1904

Comment: On the left-hand of the picture is the memorial to the Gas Installation in Lymington, This memorial is now residing on the paved area immediately to the South of the RLym YC.

The "Way" stone pathway can be clearly seen running across the road.



St.Thomas St. near the church - 1910s

There seems to be a "Way" shown in this picture opposite the church entrance.
A safe means of crossing the road without going through too much mud.



Grove Gardens, Lymington - 1960



Lymington, St Thomas's Street 1924



Lymington Town Railway Station – 1905

The Steam Omnibus in the foreground provided a service between the Lymington and New Milton stations but because of its weight it frequently became stuck in the unpaved roadway and was withdrawn from service.



Lymington High Street - 1935



St Thomas's Street - 1930s



Lymington High Street - 1930



Lymington High Street - 1955



Lower High Street – 1910

Comment: An excess of street furniture and other paraphernalia is nothing new.



Lower High Street - 1930



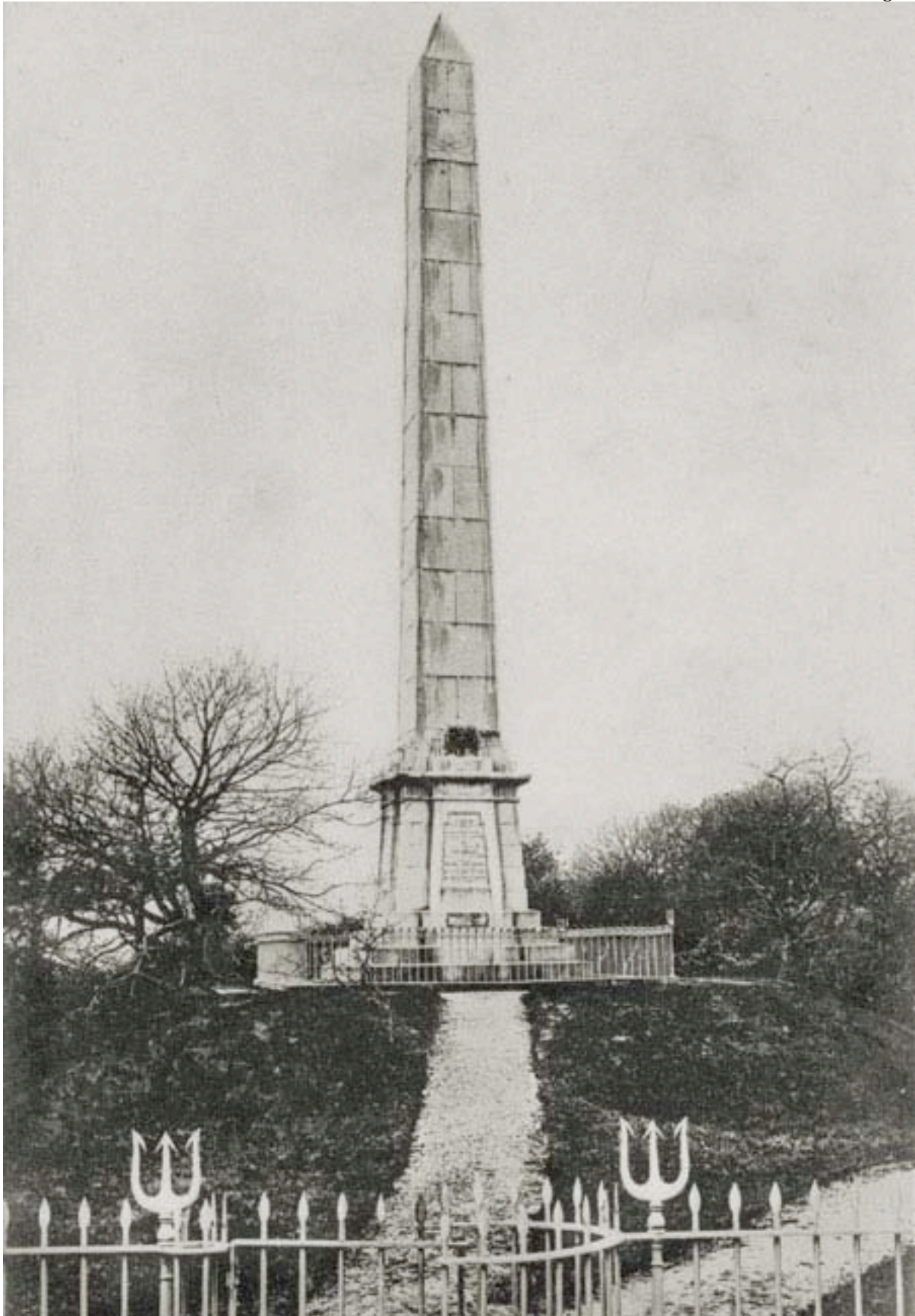
Quay Hill - 1960



St Thomas's Street - 1924



St Thomas's Street - 1910



The Obelisk, Walhampton, Lymington – 1921

Comment: It is untrue that two Maseratis are buried in the foreground.



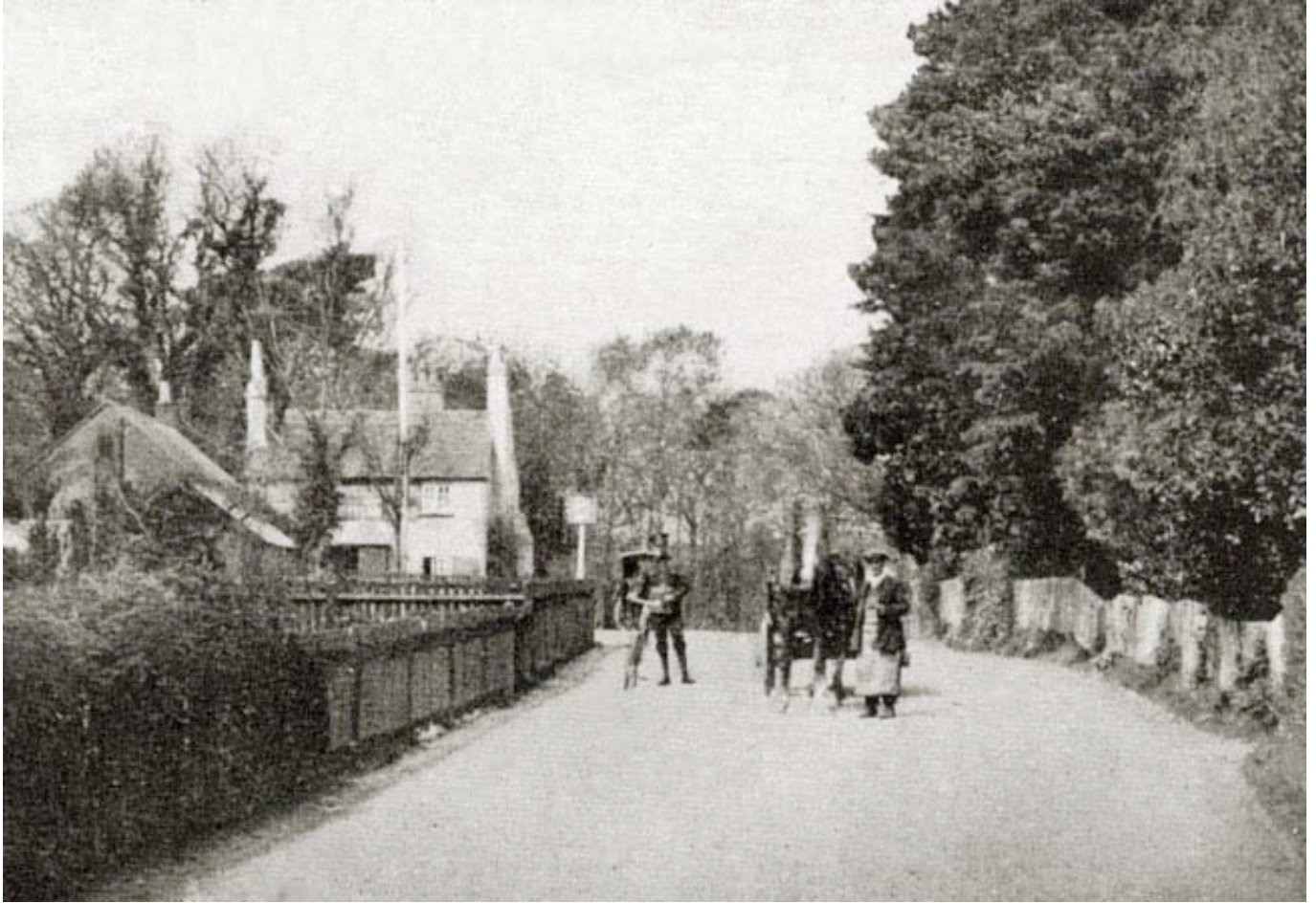
Seawater Baths - Water Polo 1960



Lymington, Lower High Street - 1907



Lymington Railway Station - 1953



Lymington, Southampton Road - 1914, Tollhouse Inn on the left



Lymington High Street - 1930



High Street - Opposite the church 1910



Lymington Church about 1796



Lymington, High Street 1940s



Lymington, High Street 1930s



Lymington, High Street 1950s



Lymington, High Street 1904



The Third Lymington Town Hall, pulled down in 1858 (From a drawing by Edward King)



Lymington Church 1904



Lymington, High Street 1950s



Lymington, High Street 1963



Lower High Street, Lymington - c1900

Hoped you enjoyed the pictures.